



## A Scouts Canada Wilderness Property

### What's in this package....

This package includes important information for groups using the Alloway Wilderness Reserve to help them plan and enhance their outdoor adventure and wilderness experience at Alloway.

With its 48 hectares of isolated pristine boreal forest wilderness, Alloway is an ideal and unique location for youth and adult members of Scouts Canada to experience and practice back-country camping while still providing easy access to modern facilities.

This package also includes helpful hints and program suggestions to make your outdoor wilderness adventure safe and enjoyable for all participants.

If you have questions or need more information, contact the Alloway Management Team at [scoutertrog@outlook.com](mailto:scoutertrog@outlook.com).

**Note: The Alloway Wilderness Reserve is an unstaffed wilderness camp. Groups using Alloway are responsible for organizing and running their wilderness experience and are required to follow all current Scouts Canada policies, procedures and standards for outdoor activities to ensure the safety and well-being of all participants.**

# Getting to Alloway

Alloway is located about 165km from Winnipeg on the eastern shores of the Big Whiteshell Lake in the Whiteshell Provincial Park. To access Alloway, groups drive out to the Big Whiteshell and then travel across the lake by power boat or canoe for the more experienced groups.

For those planning a winter outdoor adventure, Alloway can be accessed by hiking or sledding across the lake ice. Two routes for getting to the Big Whiteshell Lake from Winnipeg are provided below.

**Note: Alloway is located within the boundaries of the Whiteshell Provincial Park and a valid provincial park permit is required while visiting Alloway.**

## Via Highway 44

- Travel to the Northeast corner of Winnipeg and go North on Hwy 59
- Take Hwy 59 to Hwy 44
- Turn East onto Hwy 44
- Take Hwy 44 past Beausejour to Hwy 11
- Turn North onto Hwy 11
- Take Hwy 11 to Provincial Road 307
- Turn East onto Provincial Road 307 past Seven Sisters
- Take Provincial Road 307 to Provincial Road 309
- Turn Northeast onto Provincial Road 309
- Continue on to Big Whiteshell Lake
- Turn East onto the South Shore road to the primary boat launch in the Provincial Camp Grounds

## Via Highway 15

- Travel to the East side of Winnipeg and go East on Hwy 15
- Take Hwy 15 to Hwy 11 (Elma)
- Turn North onto Hwy 11
- Take Hwy 11 North to Hwy 44
- Turn East onto Hwy 44
- Take Hwy 44 past Rennie to Provincial Road 307
- Turn North onto Provincial Road 307
- Take Provincial Road 307 North to Provincial Road 309
- Turn Northeast onto Provincial Road 309
- Continue on to Big Whiteshell Lake
- Turn East onto the South Shore road to the primary boat launch in the Provincial Camp Grounds

For a more direct route across the lake to Alloway, groups can go to the secondary boat launch:

- Continue past the Provincial Camp Grounds to road ER53
- Turn East onto ER53
- Continue on to the secondary boat launch

# Getting to Alloway

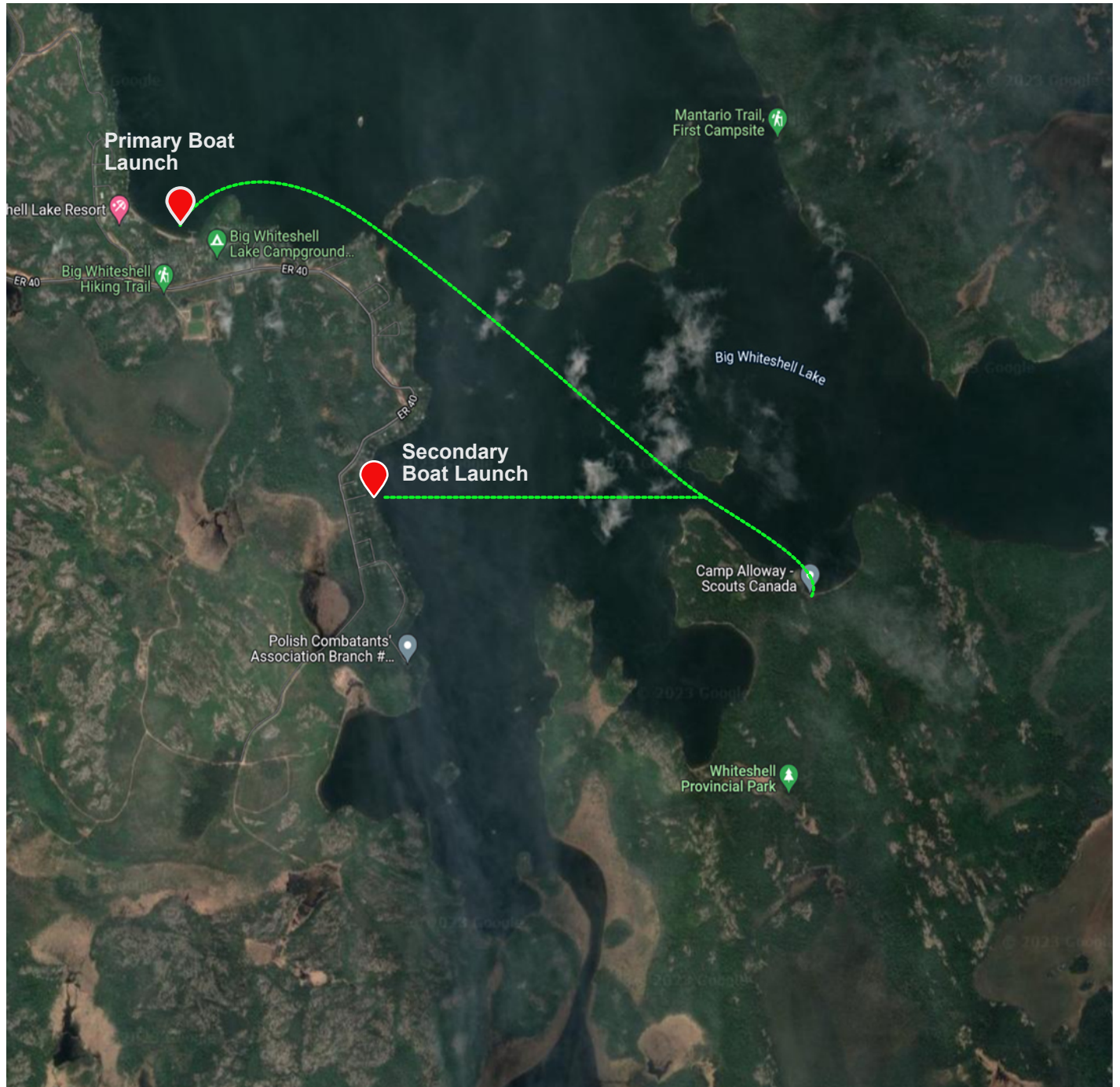


Image Courtesy of Google Maps

There is limited vehicle parking available by the secondary boat launch on ER53. Additional parking is available in the lot across from the Provincial camp ground.

**Note: Alloway property fees do not include provincial park entry or user fees. Groups using Alloway are responsible for purchasing a park permit to enter the Whiteshell Provincial Park.**

# Program Planning

Uniquely located in an isolated cove on Big Whiteshell Lake, Alloway is an excellent outdoor adventure destination for both novice and experienced wilderness and back-country camping participants.

With its camping and activity areas and access to numerous back-country canoe routes, Alloway is a perfect setting to learn and practice a wide variety of outdoor and wilderness skills. Its large sandy beach is one of the best swimming spots on the lake and second only to the beach at the Provincial Camp Grounds. The cove is protected from wind on three sides making it an excellent location for learning and honing canoeing and paddling skills before venturing out into open water.

**Note: The list includes some activities that can be included in an outdoor wilderness adventure at Alloway. User groups are responsible for planning and organizing the activities for their wilderness adventure while at Alloway.**

Program activities that can be run at Alloway include:

- Wilderness Camping
- Canoeing
- Boating
- Swimming
- Crafts
- Wilderness first aid
- Orienteering
- GPS
- Camp fires
- Astronomy
- Fishing
- Hiking
- Leave-No-Trace

Scouts Canada Trail Cards that can be completed by Scouts, Venturers and Rovers at Alloway include:

- Active & Healthy Living
- Beliefs & Values
- Citizenship
- Creative Expression
- Leadership
- Environment & the Outdoors

Alloway is also an ideal location for participants to learn about and practice Leave-No-Trace (LNT) wilderness principles. For specific programs and activity ideas related to LNT principles and practices, visit <https://leavenotrace.ca>.

# Program Planning

ALLOWAY  
Wilderness  
RESERVE



The four geo-caches at Alloway gives participants the opportunity to learn about and practice using hand-held GPS units.

The Point: 50° 04' 03.7"N 95° 19' 10.3"W

Natural Wonder: 50° 04' 00.2"N 95° 19' 09.1"W

Burning Station: 50° 04' 03.0"N 95° 19' 16.6"W

Grand Stump: 50° 03' 59.2"N 95° 19' 15.2"W

# Camping Equipment

Facilities at Alloway are limited in order to minimize the environmental impact and provide participants with a wilderness experience. The main building (the boathouse) can be used for a variety of purposes such as a cooking shelter, dining hall, activity area and equipment storage.

Alloway's location on the Big Whiteshell Lake is isolated but transporting participants, equipment and supplies is just a short boat ride from either the primary boat launch at the Provincial camp grounds or the secondary boat launch at road ER53.

**Note: Following is a list of suggested equipment and gear for staying at Alloway. User groups are responsible for providing all equipment and supplies needed for their wilderness adventure and the safety and well-being of all participants.**

Suggested camp equipment for Alloway  
(individual group needs may vary):

- Camp stoves
- Tents
- Paddles
- Canoes
- PFDs or life jackets
- First aid kits
- Camp cooking supplies
- Potable water/water treatment
- Camp lanterns
- Boat safety kits
- Water Containers
- Camp kitchen
- GPS/Compass

Suggested participant gear for Alloway  
(individual participant needs may vary):

- Sleeping bag
- Backpack/dry bag
- Extra clothing
- Mess kit
- Wind breaker/rain jacket
- Warm clothing
- Hiking shoes/boots
- Water shoes
- Wide brim hat
- Flashlight
- Water bottle

Suggested equipment/gear for winter outdoor adventures include:

- Winter coats, boots, toques, mitts
- Snowshoes, skis,
- Warming shelter

# Property and Building Use Policies

## 1. General:

- 1.1 Use of Alloway Wilderness Reserve (also known as Camp Alloway or Alloway) is restricted to registered members of Scouts Canada.
- 1.2 Event organizers must reserve the property prior to using Alloway for outdoor events and/or program activities.
- 1.3 Event organizers reserving Alloway are required to follow current Scouts Canada's policies, procedures and standards for outdoor activities including but not limited to the following:
  - 1.3.1. Safety First Policy
  - 1.3.2. Adventure Standards
  - 1.3.3. Emergency Management Standards
  - 1.3.4. First Aide Standards
  - 1.3.5. Transportation Standards
  - 1.3.6. Watercraft Standards
- 1.4. Event organizers are responsible for paying all Provincial Park permits and fees associated with entering the Whiteshell Provincial Park.

## 2. Emergency Procedures:

Event organizers are required to follow current Scouts Canada policies, procedures and standards to ensure the safety and well-being of all participants.

- 2.1. In the event of a mandatory evacuation from Alloway Wilderness Reserve:
  - 2.1.1. The muster point is located at the beach on the east side building No. 1 (the 'Boathouse')
  - 2.1.2. Strawberry Island is the primary evacuation location
  - 2.1.3. The Provincial Government camp site is the secondary evacuation location

## 3. Events and Programs:

Event organizers using Alloway are responsible for planning, staffing, equipping, supplying and running the event and associated program activities.

- 3.1. Alloway Wilderness Reserve **does not** provide:
  - 3.1.1. Event and program planning
  - 3.1.2. On site staff during events
  - 3.1.3. Transportation services to and from Alloway
  - 3.1.4. Camping equipment and supplies
  - 3.1.5. Program equipment and supplies
  - 3.1.6. Food services
- 3.2. Event organizers are responsible for providing:
  - 3.2.1. Event and program planning
  - 3.2.2. On site staff during events
  - 3.2.3. Transportation to and from Alloway
  - 3.2.4. Camping equipment and supplies
  - 3.2.5. Program equipment and supplies
  - 3.2.6. Food services

# Property and Building Use Policies

## 4. Property:

To maintain Alloway's wilderness environment and in keeping with Scouts Canada policies and 'Leave-no-Trace' principles, event organizers are responsible for ensuring that:

- 4.1. Participants stay on established walking trails.
- 4.2. Temporary shelters and tents are erected on established camp sites and clearings.
- 4.3. The felling or removal of trees, shrubs and bushes for firewood or other uses is prohibited.
- 4.4. The collection of dead-fall for firewood or other uses is prohibited.
- 4.5. All food products must be removed at the conclusion of the event.
- 4.6. All refuse must be removed at the conclusion of the event.
- 4.7. The burning of refuse is prohibited.
- 4.8. The feeding of wildlife is prohibited.

## 5. Buildings:

Access to and authorized use of the buildings at Alloway are as follows:

- 5.1. Building No. 1 (the 'Boathouse') can be used for:
  - 5.1.1. Cooking
  - 5.1.2. Dining
  - 5.1.3. Program activities
  - 5.1.4. Shelter
  - 5.1.5. Storage
- 5.2. Building No. 1 (the 'Boathouse') cannot be used as a sleeping shelter except in the case of an emergency
- 5.3. Access to the following buildings is restricted:
  - 5.3.1. Buildings No. 2 & 3 (the 'Cub cabins')
  - 5.3.2. Building No. 4
  - 5.3.3. Building No. 5
- 5.4. Buildings No. 2 & 3 (the 'Cub cabins') cannot be used for:
  - 5.4.1. Program activities
  - 5.4.2. Sleeping
  - 5.4.3. Storage
- 5.5. Buildings No. 2 & 3 (the 'Cub Cabins') cannot be used as a shelter except in the case of an emergency.
- 5.6. Building No. 4 cannot be used for:
  - 5.6.1. Program activities
  - 5.6.2. Shelter
  - 5.6.3. Sleeping
  - 5.6.4. Storage
- 5.7. Building No. 5 cannot be used for:
  - 5.7.1. Program activities
  - 5.7.2. Shelter
  - 5.7.3. Sleeping
  - 5.7.4. Storage
- 5.8. Use of space heaters is not permitted in any building except in the case of an emergency.



# Property and Building Use Policies

## 6. COVID-19 Protocols:

To ensure the health and safety of all participants, Alloway has implemented the following COVID-19 protocols:

- 6.1. User groups must follow all COVID-19 restrictions, guidelines, policies, procedures for outdoor activities outlined by:
  - 6.1.1. Scouts Canada
  - 6.1.2. Federal Health Authorities
  - 6.1.3. Provincial Health Authorities
  - 6.1.4. Municipal Health Authorities
  - 6.1.5. Local Health Authorities
- 6.2. Buildings No. 2 & 3 can be used to isolate participants who are symptomatic.



**Comments:**

The Alloway Wilderness Reserve can be improved to better meet participants expectations for an outdoor wilderness adventure by:

Additional comments or suggestions:

**Send your feedback to:**